

Q33

0.46MP Thermal Bullet with Fixed Lens



- Uncooled microbolometer thermal sensor
- 25/30 fps at full D1 resolution
- Fixed Lens with f20mm / F1.0, Manual Focus
- Two-way audio
- Video Motion Detection
- Digital input and digital output
- Weatherproof (IP68) and Vandal Proof metal casing (IK10), NEMA 4X

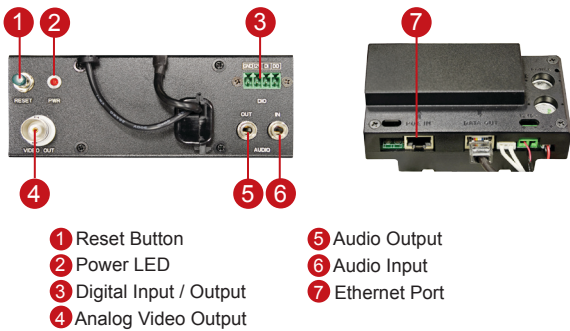
FEATURE INTRODUCTION

Motion Notification

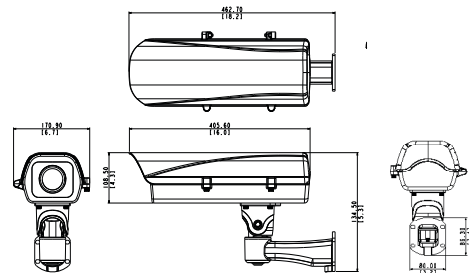


Motion Notification senses suspicious activities in the surrounding and trigger the speed dome to track the suspicious object by capturing motion of heat. This feature is suitable to perimeter control applications to detect objects that are difficult to reach in insufficient lighting conditions. The motion notification helps to maximize the ability to secure areas by collaborating speed dome camera with multiple thermal imagers. ACTi IVS server also provides intelligent video analytics like line-crossing, enter area, and loitering for more precise area protection.

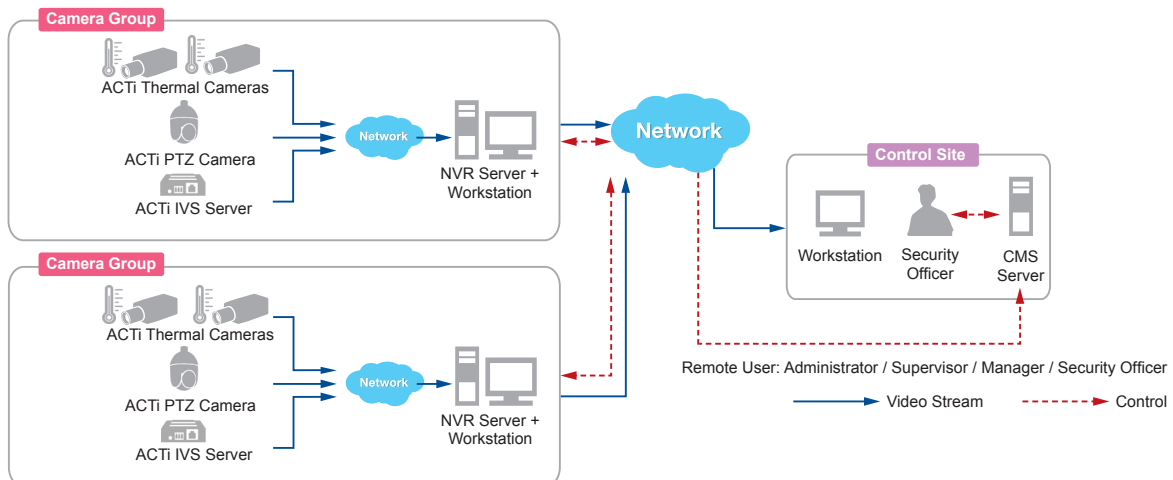
PHOTO INDICATION



DIMENSION DIAGRAM



SOLUTION ARCHITECTURE



PRODUCT SPECIFICATION

• Device

Product Type	Thermal Bullet Camera
Image Sensor	Thermal
Effective Pixels	640 (H) x 480 (V) (0.3 MP)
Thermal Sensitivity	NETD <50mK at F1.0
Spectral Range	8-14µm
Color Palette	10 different color palettes (Grey, Iron, Rain, Yellow, Fire, Blue Red)

• Lens

Focal Length / Aperture	Fixed focal, f20mm / F1.0	
Iris	Fixed iris	
Lens Mount	Board Mount	
Focus	Manual focus	
Horizontal Viewing Angle	30.4°	
Observation Range	Detection	People: 666.67 m Vehicle: 1215.69 m
	Recognition	People: 250 m Vehicle: 455.88 m
	Identification	People: 133.33 m Vehicle: 243.14 m

• Video

Compression	H.264 (Baseline/ Main/ High profile), MJPEG
Max. Frame Rate vs. Resolution	NTSC: 30 fps at 960 x 480, 30 fps at 720 x 480 PAL: 25 fps at 960 x 576, 25 fps at 720 x 576
Multi-Streaming	Simultaneous dual streams based on two configurations
Bit Rate	28 Kbps - 6 Mbps (per stream)
Bit Rate Mode	Constant, Variable
Privacy Mask	4 configurable regions
Text Overlay	Yes
Image Enhancement	Brightness, Saturation, Contrast, Sharpness, Automatic gain control
Image Orientation	Mirror, Flip

• Audio

Audio Type	2-way, Line-in, Line-out
Compression	8 kHz, 16 bit encoding, Mono, PCM, G.711

• Network

Network Protocol & Service	IPv4/v6, TCP, UDP, DHCP, PPPoE, HTTP, HTTPS, DNS, DDNS, NTP, RTP, RTSP, RTCP, SMTP, FTP, IGMP, ICMP, ARP, Bonjour, UPnP, QoS, SNMP, IEEE 802.1X
Ethernet Port	1 x RJ-45 connector
Security	IP address filtering, HTTPS encryption, Password protected user level, Anonymous login, IEEE 802.1X network access control

• Event

Event Trigger	Video motion detection (9 regions), External device through digital input, Sound detection
Event Response	Notify control center, Change camera settings, Command other devices, E-mail notification with snapshots, Upload video or snapshot to FTP server, Activate external device through digital output

• Interface

Audio Interface	1/1, 3.5mm Phone Jack
Analog Video Output	1, CVBS, BNC connector
Digital Input / Output	1/1 (Terminal block)

• General

Power Source / Consumption	High PoE / 30W (PoE, heater and fan on)
Weight	3.892 kg (8.582 lb)
Dimension (W x H x D)	170.9 * 134.5 * 462.7 mm (6.73" x 5.29" x 15.97")
Environmental Casing	Weatherproof (IP68), Vandal proof metal casing (IK10)
Bundled Accessory	Integrated bracket
Mount Type	Surface, Wall Mount, Pole Mount
Fan	Yes
Heater	Yes
Starting Temperature	-40°C ~ 60°C (-40°F ~ 140°F) within 30 minutes
Operating Temperature	-40°C ~ 60°C (-40°F ~ 140°F)
Operating Humidity	10% ~ 85% RH
Approvals	CE (EN 55022 Class B, EN 55024), FCC (Part15 Subpart B Class B), IP68, NEMA 4X, IK10 (metal casing), UL (for optional PoE injector)

• Integration

Unified Solution	Fully compatible with ACTi software
ISV Integration	Software Development Kit (SDK) available, ONVIF compliant
GPS Position	Manual setting
Firmware Access Browser	Microsoft Internet Explorer 11

* All specifications are subject to change without notice.
* All brand names and registered trademarks are the property of their respective owners.